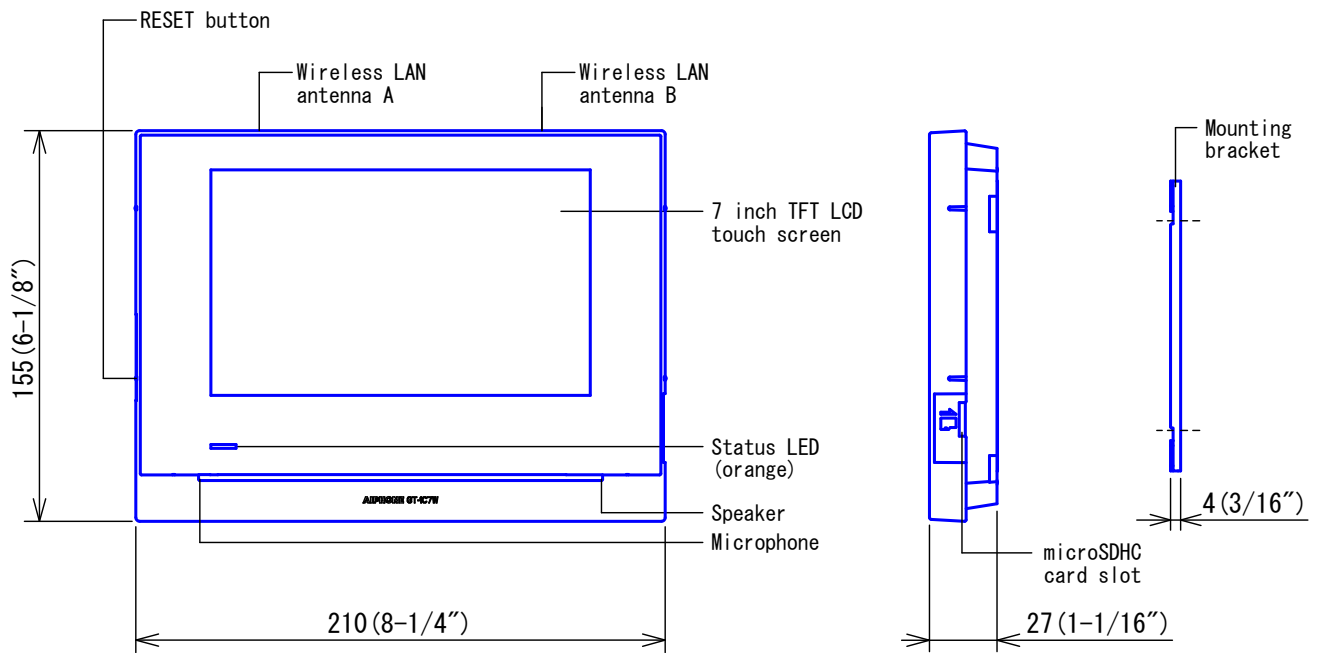
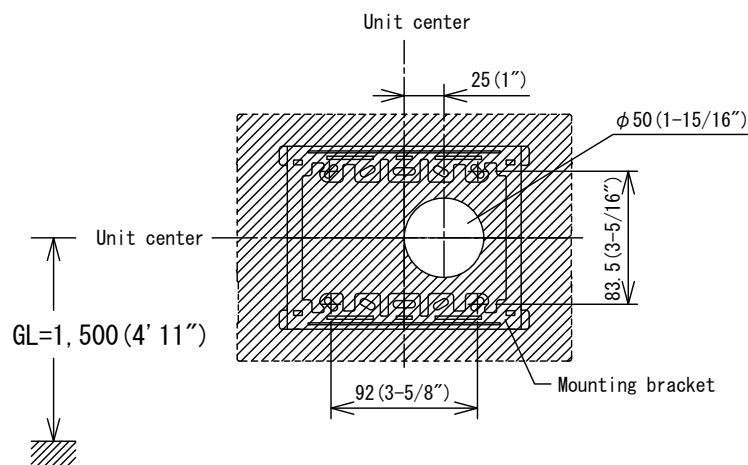


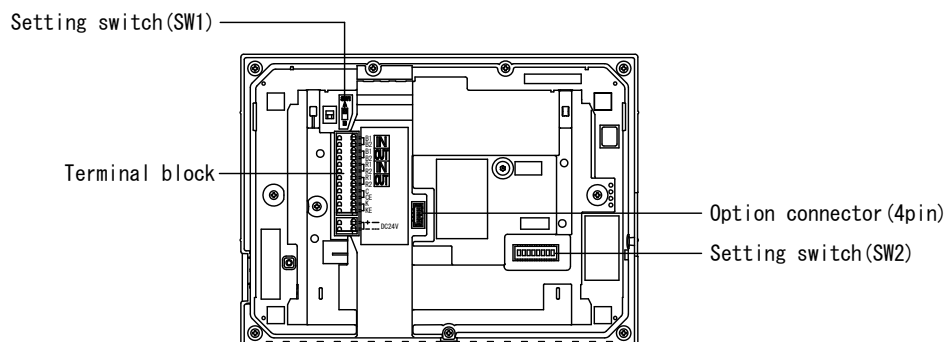
PRODUCT DRAWING



MOUNTING



<Back view>

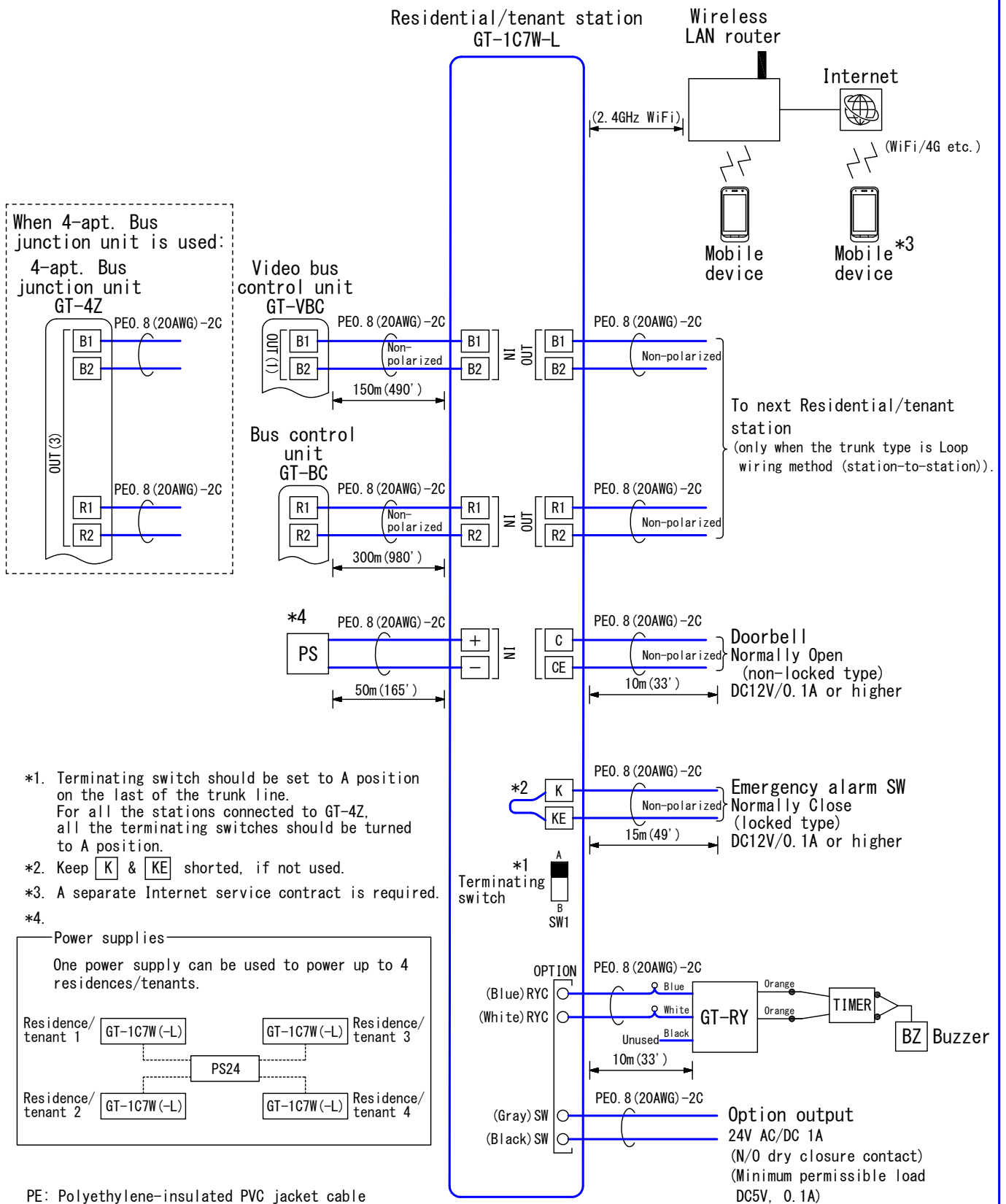


DESCRIPTION	FIG. NAME	UNIT	DATE
RESIDENTIAL/TENANT STATION	PRODUCT DRAWING	mm	10 November, 2020
MODEL NO.	FIG. NO.	PAGE	REVISION
GT-1C7W-L	G56630-1-9	1/9	1
AIPHONE			

■ SPECIFICATIONS

Power source		24V DC, Supplied from a power supply		
Current consumption		Standby 60mA, Max. 360mA		
Video monitor		7 inch TFT LCD touch screen		
Pixels		800 x 480 (Approx. 384,000 pixels)		
Type of communication		Open voice hands-free auto-voice actuation or Touch-to-talk communication		
Operating ambient temperature		0 - 40°C (32 - 104° F)		
Station capacity		Door bell: 1		
Wiress LAN interface		IEEE802.11b/g/n (2.4GHz only) 1ch-11ch		
Video memory		Built-in memory: Max. 10 recordings (10 seconds/recording) microSDHC card : Max. 1,000 recordings (10 seconds/recording)		
Protect video		Built-in memory: Max. 5 recordings microSDHC card : Max. 100 recordings		
SD card	Supported card	microSDHC card : 4GB-32GB		
	Format	FAT32		
	File type	H.264		
Mounting		Surface wall mount		
Material		Unit case: Self-extinguishing PC + ABS resin		
		Surface panel: Glass		
Weight		Approx. 620g (1.37 lbs)		
Unit color		Snow white (5Y9.3/0.1 Munsell Approximation)		
DESCRIPTION		FIG. NAME	UNIT	DATE
RESIDENTIAL/TENANT STATION		SPECIFICATIONS	mm	10 November, 2020
MODEL NO.		FIG. NO.	PAGE	REVISION
GT-1C7W-L		G56630-2-9	2/9	1
				AIPHONE

■ WIRING DIAGRAM



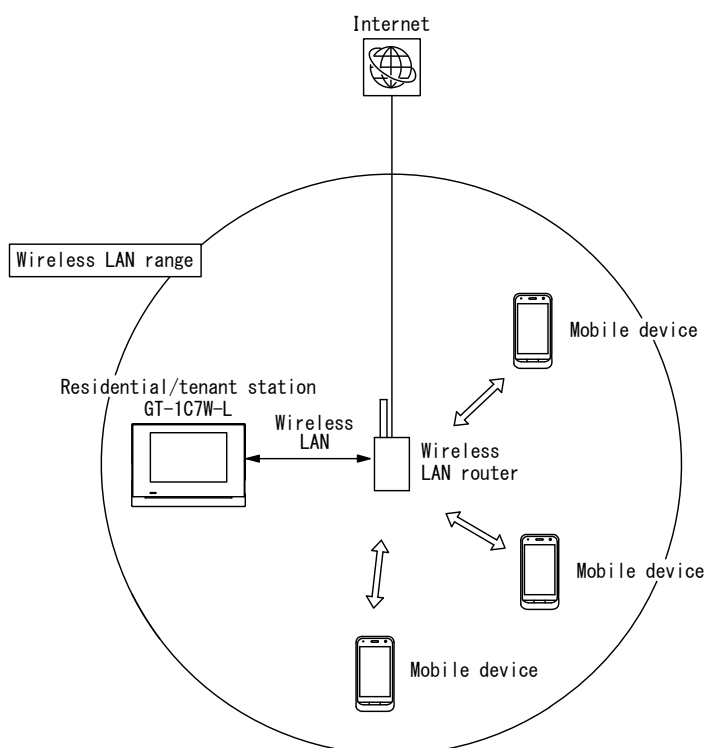
DESCRIPTION	FIG. NAME	UNIT	DATE
RESIDENTIAL/TENANT STATION	WIRING DIAGRAM	mm	10 November, 2020
MODEL NO.	FIG. NO.	PAGE	REVISION
GT-1C7W-L	G56630-3-9	3/9	1
AIPHONE			

■ ABOUT WIRELESS LAN COMMUNICATION

- Depending on the hearing aid, noise might occur in voice communication with a smartphone or the like for which operation of the intercom application has been confirmed.
- Audio might be interrupted or experience noise during speaking while moving or when an automobile or motorcycle passes close by.
- If any obstructions described below are present in the space between the wireless LAN router and the Residential/tenant station, the radio waves can be blocked and become extremely weak. For this reason, even when the distance to the Residential/tenant station is not far, audio corruption or audio drop-out, corrupted pictures, slow video, or inability to communicate might occur.
 - Metal doors or storm doors
 - Walls containing insulating material with an aluminum-foil lining
 - Concrete or galvanized sheet-steel walls
 - Large number of walls or other obstructions, even within a wooden structure
(When using a mobile device in a room different from the room in which the Residential/tenant station is installed or on another floor.)
- Cases of deliberate third-party eavesdropping of wireless communication may occur.
Always encrypt your wireless LAN networks.

⚠ Important Notes

- When using a mobile device indoors, it must be used within the wireless LAN range centered on a wireless LAN router or 3G/4G.
- Communication between the wireless LAN router and the mobile device must be encrypted.
- If the power for the wireless LAN router on the Residential/tenant station is not turned on, the intercom functionality of the mobile device cannot be used.
- If the wireless LAN router or mobile device is not connected to the Internet, the intercom functionality of the mobile device cannot be used.



DESCRIPTION	FIG. NAME	UNIT	DATE
RESIDENTIAL/TENANT STATION	ABOUT WIRELESS LAN COMMUNICATION	mm	10 November, 2020
MODEL NO.	FIG. NO.	PAGE	REVISION
GT-1C7W-L	G56630-4-9	4/9	1
AIPHONE			

■ ABOUT WIRELESS LAN INTERFERENCE

- The Residential/tenant station uses the band of 2.4GHz.
(The band for motion-detection devices can be avoided.
Modulation method: DS-SS or OFDM; interference-producing distance is 40 m.)
Because interference with the following equipment can occur, installation at a distance of 3 m or greater is recommended.
 - Digital cordless telephones, facsimile machines, microwave ovens, other wireless LAN equipment (routers, audiovisual equipment, security equipment), etc.
 - Other equipment that uses radio waves in the 2.4GHz frequency band
 - Wireless audiovisual equipment (television sets, video decks, personal computers, etc.)
 - Wireless controllers for game consoles
 - Amateur radio stations
 - Material-handling management systems in factories, warehouses, etc.
 - Detection systems in railway cars and emergency vehicles
 - Microwave-using medical equipment
 - Mobile telephones
 - Transceivers
 - Bluetooth(TM)-capable equipment, optical beacons, etc.
- Because proximity to television sets, radios, and other electrical products can cause noise or radio interference, install as far from such equipment as possible.
(recommended minimum: 3 m)
 - Magnetism and fluorescent lighting, refrigerators, etc.: can cause interruption in communication with the mobile device
 - Television sets, radios, door station, etc.: can cause noise, picture corruption, or other interference
 - Audiovisual and office-automation equipment, etc.: the ring tone of the mobile device might fail to be produced
 - Chargers, AC adapters, etc., for other equipment (smartphones, etc.): Communication of the mobile device might be interrupted, the ring tone might fail to be produced
 - Television-set coaxial plugs, speakers, etc.: noise might occur between mated equipment

[IMPORTANT NOTES ABOUT THE WIRELESS LAN]

- In addition to microwave ovens and other industrial, scientific, and medical equipment, indoor wireless communication stations (license-requiring wireless communication stations) for motion detection used on factory production lines and the like, designated low-power wireless communication stations (wireless communication stations that do not require a license), and amateur radio stations (license-requiring wireless communication stations) use the frequency band used by the Residential/tenant station.
 - Before using the Residential/tenant station, check to make sure that no indoor wireless communication stations for motion detection or designated low-power wireless communication stations are in use in the vicinity.
 - In the event that incidents of harmful radio-wave interference from the Residential/tenant station are experienced by a wireless communication station for motion detection, take action to ensure no mutual interference, such as installing partitions to avoid interference or relocating the equipment.

DESCRIPTION	FIG. NAME	UNIT	DATE
RESIDENTIAL/TENANT STATION	ABOUT WIRELESS LAN INTERFERENCE	mm	10 November, 2020
MODEL NO.	FIG. NO.	PAGE	REVISION
GT-1C7W-L	G56630-5-9	5/9	1
AIPHONE			

■ RESTRICTIONS ON OPERATING

- Due to hands-free auto-voice actuation system, smooth voice switching may be hindered by voice strength of the opponent or ambient noise, etc.
- Room-to-room communication is not available.
- Register a wireless LAN router to only one GT-1C7W(-L) in the same residence/tenant.
- Hands-free communication with T-mode hearing aid is effective up to 20 to 30cm (7-7/8" to 12") from the front of the unit.
- The magnetic field of T-mode hearing aid coil may pass through thin walls.

■ RESTRICTIONS REGARDING THE INTERCOM FUNCTIONALITY OF THE SMARTPHONE, etc.

- When using a mobile device, prepare a commercially available Wi-Fi router to connect the system to the Internet.
- Depending on the performance of the network environment and the mobile device, audio drop-out or latency in picture acquisition might occur.
- Because communication with the mobile device is intercommunication, there can be cases where, depending on the communication audio of the other device, the ambient environment, or the like, natural communication such as simultaneous intercommunication can not be feasible.
- Using the Residential/tenant station over the internet is not possible.
- The audio and the picture on the mobile device might be unsynchronized.
- Up to 8 mobile devices can be registered for a single Residential/tenant station.
- The wireless LAN cannot be used without an internet service contract.

■ RESTRICTIONS ON WIRING

- For wiring, use a single PVC jacketed cable with PE(polyethylene) insulation.

The following cables can not be used;

- Coaxial cable
- Individual conductors
- Twisted pair cable
- Cable with conductors in odd number

PARALLEL CABLE



COAXIAL CABLE



ODD NO.
OF CONDUCTORS



- Keep the intercom wires more than 30cm away from AC power lines, otherwise communication noise or malfunction may occur.

If using existing wiring, ensure that the cables are compatible with this system. If necessary, install new cables.

- Unused connector lead wire should be cut and insulated.

■ RESTRICTIONS ABOUT THE NETWORK

- Due to the features and services provided by this station and the AIPHONE Type GT app, future required changes to device functionality, network communication, security, etc. may require firmware updates unavailable to this station.
In this situation, this station would need to be replaced at the cost of the responsible party.

DESCRIPTION RESIDENTIAL/TENANT STATION	FIG. NAME RESTRICTIONS	UNIT mm	DATE 10 November, 2020
MODEL NO. GT-1C7W-L	FIG. NO. G56630-6-9	PAGE 6/9	REVISION 1
AIPHONE			

■FUNCTIONS

- Receiving calls from Entrance stations and Guard stations, and enable to communicate.
- Receive calls from an optional doorbell.
- Calling the Guard station.
- Picture display
- Monitoring an Entrance station, approx. 1 min. timed
- Touch-to-talk method
- Playback of recorded video by pressing Play
- Releasing of electric lock during call from a Video entrance station, while talking, while monitoring or displaying menu screen
- If doctor call (automatic entry) is active, when called from the Entrance station, the electric lock is automatically released without releasing the door at the Residential/tenant station.
- Option button: Controls external device such as entrance light
- Receive Emergency alarm from optional external devices. (Emergency call tone sounds and transfer is made to Guard stations.)
- Software version upgrade (automatic/manual)
- Viewing of the following notifications by pressing Notification
 - Software update information
 - Date and time setting
- Connecting with an intercom application is possible through the internet connection with the wireless LAN router and the Residential/tenant station
- An INTERCOM APP AIPHONE Type GT (iOS, Android) can be used for this system
For detailed information, refer to our website (<https://www.aiphone.net/>)
- Communication/monitor with T-mode accommodating hearing aid.

[RECORDING FUNCTIONS]

- Video can be automatically recorded after receiving a call from an Entrance station (up to 10 sec.).
- Video can be manually recorded during communication

●INTERCOM APP AIPHONE Type GT

- Call/communication from an Entrance station
- Release of electric lock
- Option button: Controls external device such as entrance light
- Switching between speaker and telephone-style communication
- Picture zoom in and zoom out through pinch-in and pinch-out operations
- Watching recordings

DESCRIPTION	FIG. NAME		UNIT	DATE
RESIDENTIAL/TENANT STATION	FUNCTIONS		mm	10 November, 2020
MODEL NO.	FIG. NO.	PAGE	REVISION	AIPHONE
GT-1C7W-L	G56630-7-9	7/9	1	

■ SETTING

Item	Setting range	Default
Brightness	1-5	3
Volume		
Receive	1-3	2
Ringtone	0-3	2
Touch Sounds	ON/OFF	ON
Date/Time		
Current Time	DAY/MONTH/YEAR/HOUR/MINUTE	1/Jan./2020/0/0
Date/Time Format	dd/mm/yyyy 23:59, dd/mm/yyyy 11:59 PM, dd/mm/yyyy PM 11:59, mm/dd/yyyy 23:59, mm/dd/yyyy 11:59 PM, mm/dd/yyyy PM 11:59	dd/mm/yyyy 23:59
Time Zone	100 time zones	-
Daylight Saving Time	None/+1 (h)	None
Language	English/Français/Nederlands/Español/Deutsch/ Norsk/Italiano/Türk/Suomi	English
Cleaning Mode		
Notification LED	ON/OFF	ON
Other Settings		
Register/Delete Apps		
Register Apps	-	-
Delete Apps	-	-
App QR Code	-	-
microSDHC Card		
Format microSDHC card	-	-
Export recordings to microSDHC card	-	-
Video Quality	Minimum/Medium Low/Medium High/Maximum	Medium Low
Station Information		
Check for FW Update	-	-
Automatic FW Update	Update Automatically/Notification Only/ Do Not Check	Update Automatically
Network		
Auto Connect (WPS)	-	-
Manual Setup		
Wi-Fi (Search SSID)		
SSID	-	-
Encryption	None/WEP/WPA-PSK (TKIP/AES) /WPA2-PSK (AES)	WPA2-PSK (AES)
Password	-	-
Wi-Fi (Manual Setup)		
SSID	-	-
Encryption	None/WEP/WPA-PSK (TKIP/AES) /WPA2-PSK (AES)	WPA2-PSK (AES)
Password	-	-
IP Address		
IP	V4/V6, Auto/Manual	V4, Auto
IP Address	-	-
Subnet Mask (v4)/ Prefix (v6)	-	-
Default Gateway	-	-
DNS Server	-	-
Connection Check	-	-
Status	-	-

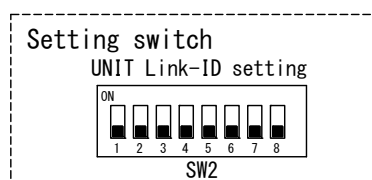
DESCRIPTION	FIG. NAME	UNIT	DATE
RESIDENTIAL/TENANT STATION	SETTING	mm	26 May, 2021
MODEL NO.	FIG. NO.	PAGE	REVISION
GT-1C7W-L	G56630-8-9	8/9	2
AIPHONE			

Item	Setting range	Default
Other settings		
Network		
Network Advanced Settings		
Wi-Fi	Enable/Disable	Enable
Antenna Selection	Antenna A/Antenna B	Antenna A
Default User Settings	–	–
Regulatory	–	–
Privacy Policy	–	–

• Administrator settings

Item	Setting range	Default
Display (Button/Icon)		
Door Release	Enable/Disable	Enable
Option Output	Enable/Disable	Enable
Guard Station	Enable/Disable	Enable
Doctor Call	Enable/Disable	Disable
Light or CCTV	Enable/Disable	Disable
Hearing Aid Icon	Enable/Disable	Enable
Option Output	1–30 sec.	5 sec.
Factory Reset	–	–
Export Logs	–	–

- Terminate switch((A: terminated)/B)..... SW1
- UNIT Link-ID setting (0000 0000~1111 1010(8bit))..... SW2-1 to 8



DESCRIPTION RESIDENTIAL/TENANT STATION	FIG. NAME SETTING	UNIT mm	DATE 10 November, 2020
MODEL NO. GT-1C7W-L	FIG. NO. G56630-9-9	PAGE 9/9	REVISION 1 AIPHONE